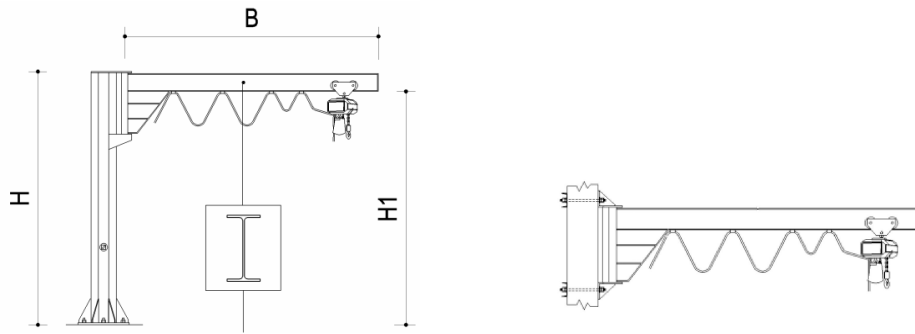


JIB CRANE cantilever version



It is manufactured using a double T structural steel and the hoist-carrying trolley is sliding on its lower flanges. The cantilever is self-supporting and without support tie-rods and it is linked directly to the rotation tubular girder. It ensures a considerable room-saving due to the absence of tie-rods.

Column-mounted models

- ✓ column in pressed sheet steel
- ✓ rotating boom on ball bearings
- ✓ adjustable brake
- ✓ flat cable
- ✓ plastic cable-holder
- ✓ ON-OFF switch on the column
- ✓ anti-rust and enamel painting

Wall-mounted models

- ✓ brackets in pressed sheet steel
- ✓ rotating boom on ball bearings
- ✓ adjustable brake
- ✓ flat cable
- ✓ plastic cable-holder
- ✓ anti-rust and enamel painting

Jib Cranes with arm in cantilever version

are available Jib Crane with different heights or length of arms

| Lifting capacity Kg | arm (B) mt | COLUMN-MOUNTED | | model | WALL-MOUNTED model |
|------------------------|---------------|-----------------|-----------------------|----------|-----------------------|
| | | standard height | | | |
| | | total (H) mt | under beam (H1) mt. | | |
| 125 | 3 | 3 | 2,82 | CT125-3 | MT125-3 |
| | 4 | 3 | 2,80 | CT125-4 | MT125-4 |
| | 5 | 3 | 2,78 | CT125-5 | MT125-5 |
| | 6 | 3 | 2,76 | CT125-6 | MT125-6 |
| | 7 | 3 | 2,74 | CT125-7 | MT125-7 |
| | 8 | 3 | 2,74 | CT125-8 | MT125-8 |
| 250 | 3 | 3 | 2,80 | CT250-3 | MT250-3 |
| | 4 | 3 | 2,78 | CT250-4 | MT250-4 |
| | 5 | 3 | 2,76 | CT250-5 | MT250-5 |
| | 6 | 3 | 2,71 | CT250-6 | MT250-6 |
| | 7 | 3 | 2,68 | CT250-7 | MT250-7 |
| | 8 | 3 | 2,68 | CT250-8 | MT250-8 |
| 500 | 3 | 3 | 2,76 | CT500-3 | MT500-3 |
| | 4 | 3 | 2,74 | CT500-4 | MT500-4 |
| | 5 | 3 | 2,71 | CT500-5 | MT500-5 |
| | 6 | 3 | 2,68 | CT500-6 | MT500-6 |
| | 7 | 3 | 2,65 | CT500-7 | MT500-7 |
| | 8 | 3 | 2,62 | CT500-8 | MT500-8 |
| 1000 | 3 | 3 | 2,71 | CT1000-3 | MT1000-3 |
| | 4 | 3 | 2,68 | CT1000-4 | MT1000-4 |
| | 5 | 3 | 2,65 | CT1000-5 | MT1000-5 |
| | 6 | 3 | 2,62 | CT1000-6 | MT1000-6 |
| | 7 | 3 | 2,58 | CT1000-7 | MT1000-7 |
| | 8 | 3 | 2,53 | CT1000-8 | MT1000-8 |
| 2000 | 3 | 3 | 2,62 | CT2000-3 | MT2000-3 |
| | 4 | 3 | 2,58 | CT2000-4 | MT2000-4 |
| | 5 | 3 | 2,53 | CT2000-5 | MT2000-5 |

We reserve the right to make constructive amendments.